

Sika AnchorFix®-3001

High-performance, professional epoxy anchoring adhesive

Product Description	Solvent-free, thixotropic, two part, epoxy resin-based, high performance anchoring adhesive for threaded rods and reinforcing bars in both cracked and un-cracked concrete.
Uses	<p>For the fixing of non-expanding anchors in the following:</p> <p><i>Structural work:</i></p> <ul style="list-style-type: none">■ Rebar / steel reinforcement anchoring in new and refurbishment works■ Threaded rods■ Bolts and special fastening / fixing systems <p><i>Metalwork, carpentry:</i></p> <ul style="list-style-type: none">■ Fixing of handrails, balustrades and supports■ Fixing of railings■ Fixing of window and door frames <p><i>In the following substrates:</i></p> <ul style="list-style-type: none">■ Concrete (cracked and un-cracked)■ Hard natural and reconstituted stone■ Solid rock■ Hollow and solid masonry■ Wood
Characteristics / Advantages	<ul style="list-style-type: none">■ Long Open Time■ Can be used in damp concrete■ High load capacity■ ETA Approval available■ ICC-ES Approval available■ Drinking Water certified■ LEED Attestation available■ Fire resistance test report available■ Seismic testing available■ Styrene-free■ Excellent adhesion to the substrate■ Shrinkage-free hardening■ Standard guns can be used (with the 250ml cartridge)■ Low odour■ Low wastage



Tests

Approval / Standards

Approvals:



European Technical Approval ETAG 001 Part 5 Option 1

Galvanised anchor & stainless steel anchors M10 to M30 and rebars Ø10 to Ø 32 mm for cracked & non-cracked concrete including seismic factor

EC Cert. 1020-CPR-090-032737

ETA-14 / 0157



European Technical Approval ETAG 001 Part 5 TR023

Post installed rebar connections of the sizes Ø8 to Ø 40 mm

EC Cert. 1020-CPD-032640

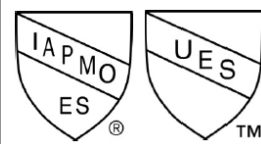
ETA-14 / 0368

Fire resistance:

Test report from the CSTB institute

REPORT No 26054326/B

on Sika AnchorFix®-3001 injection systems in conjunction with concrete reinforcing bar (Ø 8 to 40mm) and subjected to fire exposure



IAPMO Evaluation Report

Galvanised anchor & stainless steel anchors M10 to M30 ($\frac{3}{8}$ to 1 $\frac{1}{4}$ inch)

Rebars T10 to T32 (No. 3 to No. 10)

Testing according to AC 308 standards.

Report Number: 0292



ICC ES Report


Galvanised anchor & stainless steel anchors M10 to M30 ($\frac{3}{8}$ to 1 $\frac{1}{4}$ inch)

Rebars T10 to T32 (No. 3 to No. 10)


Testing according to AC 308 standards.

Report Number: ESR-3608

Drinking Water Approval:

 ANSI Accredited Program PRODUCT CERTIFICATION
Drinking Water System Components NSF / A NSI 61
K-8319

LEED Attestation:


Test report from eurofins
REPORT No G23222_4

Product Data

Form

Colours	Part A: off-white Part B: dark grey / black Part A+B mixed: grey
----------------	--

Packaging	250 ml standard cartridge, 12 per box. Pallet: 60 boxes with 12 cartridges. 400 ml side by side cartridge, 12 per box. Pallet: 50 boxes with 12 cartridges. 600 ml side by side cartridge, 12 per box. Pallet: 34 boxes with 12 cartridges. 1500 ml side by side cartridge, 5 per box. Pallet: 50 boxes with 5 cartridges.
------------------	---


Storage

Storage Conditions / Shelf-Life	24 months from date of production if stored properly in original unopened, sealed and undamaged packaging in cool and dry conditions at temperatures between +5°C and +20°C. Protect from direct sunlight. All Sika AnchorFix®-3001 cartridges have the expiry date printed on the label.
--	--

Technical Data

Density	Part A: ~1.2 kg/l Part B: ~1.8 kg/l ~1.70 kg/l (part A+B mixed)
----------------	---

Curing Speed

Temperature 	Open Time T _{gel} 	Curing Time T _{cur} 
+40°C	3 minutes	3 hours
+35°C - +40°C	4 minutes	4 hours
+30°C - +35°C	6 minutes	5 hours
+25°C - +30°C	8 minutes	6 hours
+22°C - +25°C	11 minutes	7 hours
+15°C - +22°C	15 minutes	8 hours
+10°C - +15°C	20 minutes	12 hours
+4°C - +9°C	-*	24 hours

*Min. cartridge temperature = +10°C

Sag Flow	Non-sag, even overhead.
-----------------	-------------------------

Layer Thickness	~7 mm max.
------------------------	------------

Mechanical / Physical Properties

Compressive Strength	~85 N/mm ² (7days, +20°C)	(According to ASTM D695)
Flexural Strength	~45 N/mm ² (7days, +20°C)	(According to ASTM D790)
Tensile Strength	~23 N/mm ² (7days, +20°C)	(According to ASTM D638)
E-Modulus	Compressive: ~5'000 N/mm ²	(According to ASTM D695)
	Tensile: ~5'500 N/mm ²	(According to ASTM D638)

Design	For design details, please refer to the separate documentation provided: "Technical Documentation Sika AnchorFix®-3001" Ref: 870 43 10
---------------	--

Resistance

Thermal Resistance -40 °C to +43 °C
+43 °C long term

System Information

Application Details

Consumption / Dosage Material consumption per anchor in ml

Thread Ø	Hole Ø	Theoretical volume [ml] @ a certain hole depth [mm]																	
		80	90	110	120	130	140	160	170	180	200	210	220	240	260	280	300	350	400
M8	10	3.4	3.8	4.6	5.0	5.4	5.9	6.7	7.1	7.5	8.4	8.8	9.2	10.1	10.9	11.7	12.6	14.7	16.8
M10	12	4.4	5.0	6.1	6.6	7.2	7.7	8.8	9.4	9.9	11.0	11.6	12.1	13.2	14.3	15.4	16.5	19.3	22.0
M12	14	5.6	6.3	7.7	8.4	9.1	9.8	11.2	11.8	12.5	13.9	14.6	15.3	16.7	18.1	19.5	20.9	24.4	27.9
M14	16	6.9	7.7	9.5	10.3	11.2	12.0	13.8	14.6	15.5	17.2	18.1	18.9	20.6	22.4	24.1	25.8	30.1	34.4
M14	18	11.2	12.6	15.4	16.8	18.2	19.6	22.4	23.8	25.2	28.0	29.4	30.8	33.6	36.4	39.2	42.0	49.0	56.0
M16	18	7.8	8.8	10.8	11.8	12.7	13.7	15.7	16.7	17.6	19.6	20.6	21.6	23.5	25.5	27.4	29.4	34.3	39.2
M16	20	12.6	14.1	17.3	18.8	20.4	22.0	25.1	26.7	28.3	31.4	33.0	34.5	37.7	40.8	44.0	47.1	55.0	62.8
M20	22	10.8	12.2	14.9	16.2	17.6	18.9	21.6	23.0	24.3	27.0	28.4	29.7	32.4	35.1	37.8	40.5	47.3	54.0
M20	24	16.6	18.6	22.8	24.8	26.9	29.0	33.1	35.2	37.3	41.4	43.5	45.5	49.7	53.8	58.0	62.1	72.5	82.8
M20	25	19.7	22.1	27.1	29.5	32.0	34.4	39.4	41.8	44.3	49.2	51.7	54.1	59.0	64.0	68.9	73.8	86.1	98.4
M24	26	14.2	16.0	19.6	21.4	23.1	24.9	28.5	30.3	32.0	35.6	37.4	39.2	42.7	46.3	49.8	53.4	62.3	71.2
M27	30	19.4	21.9	26.7	29.2	31.6	34.0	38.9	41.3	43.7	48.6	51.0	53.5	58.3	63.2	68.0	72.9	85.1	97.2

The indicated filling quantities are calculated without wastage. Wastage 10 - 50%.

The filled quantity can be monitored during injection with the help of the scale on the cartridge label.

Substrate Quality

Mortar and concrete must be older than 28 days.
Substrate strength (concrete, masonry, natural stone) must be verified.
Pull-out tests must be carried out if the substrate strength is unknown.
The anchor hole must always be clean, dry, free from oil and grease, etc.
Loose particles must be removed from the holes.

Threaded rods and rebars have to be cleaned thoroughly from any oil, grease or any other substances and particles such as dirt etc.

Application Conditions / Limitations

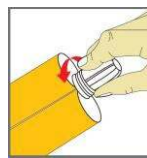
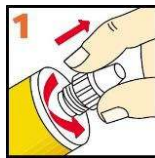
Substrate Temperature	+4 °C min. / +40 °C max.
Ambient Temperature	+4 °C min. / +40 °C max.
Material Temperature	Sika AnchorFix®-3001 must be used at a temperature of between +10 °C and +30 °C.
Dew Point	Substrate temperature during application must be at least 3 °C above dew point to avoid condensation.

Application Instructions

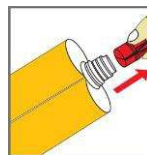
Mixing Part A : part B = 1 : 1 by volume

Mixing Tools *Getting the cartridge ready:*

250 ml 400 / 600ml / 1500ml



Unscrew and remove the cap

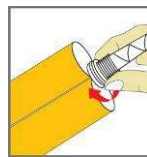
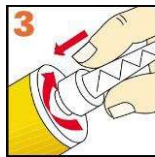


250 Cartridge:

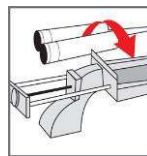
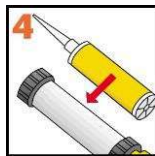
- Pull out the plug

400 / 600 & 1500ml Cartridges:

- Pull out the red plug

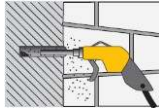


Screw on the static mixer



Place the cartridge into the gun and start application

When work is interrupted the static mixer can remain on the cartridge after the gun pressure has been relieved. If the resin has hardened in the nozzle when work is resumed, a new nozzle must be attached.



ERROR: undefined
OFFENDING COMMAND: f'~

STACK: