

Technical Data Sheet
Edition 3, 2009
Identification no.
02 04 02 06 001 0 000020
Version no. 0010
Sika Anchorfix® -2


Sika Anchorfix® -2

High-performance Anchoring Adhesive

Description	Solvent- and styrene free, epoxy acrylate based two-part anchoring adhesive.
Uses	<p>As a fast curing anchoring adhesive for all grades of:</p> <ul style="list-style-type: none"> ■ Rebars / reinforcing steel ■ Threaded rods ■ Bolts and special fastening systems ■ Concrete ■ Solid masonry ■ Steel <p>Prior to any application, the suitability of the Sika AnchorFix® Adhesive for the substrate in terms of the desired bond strength, and for the prevention of surface staining or discolouration, must be confirmed by testing in a sample area. This is due to the wide variation of possible substrates, particularly in terms of strength, composition and porosity:</p> <ul style="list-style-type: none"> ■ Hard natural stone ■ Solid rock
Characteristics / Advantages	<ul style="list-style-type: none"> ■ Fast curing ■ Standard guns can be used ■ High load capacity ■ Non-sag, even overhead ■ Styrene-free ■ Low odour ■ Low wastage ■ No transportation restrictions

Tests

Approval / Standards European Technical Approvals for threaded rods:

	
European Technical Approval ETAG 001 Part 5 Option 7	
Galvanised anchor	Stainless steel anchor
EC Cert. 0679-CPD-0027	EC Cert. 0679-CPD-0028
ETA-05 / 103	ETA-05 / 104

European Technical Approval ETAG 001 part 5 and TR 23 for rebar Anchor ETA-09/0112.

Testing according to ICC / ICBO standards.

ICC ES Legacy Report ESR-1382 Reissued December 1, 2006

Report Holder: Sika Corporation (USA)

Fire resistance:

Test report from the University of Brunswick

Report No. 3551/4926

Tests according DIN EN 1363-1 (ISO 834)



Table of contents



Product Data

Form

Colours	Part A:	light green
	Part B:	black
	Part A+B mixed:	light grey

Packaging 300 ml standard cartridge, 12 per box.

Storage

Storage Conditions / Shelf life 15 months from date of production if stored properly in original unopened, sealed and undamaged packaging in cool and dry conditions at temperatures between +5°C and +20°C. Protect from direct sunlight.

All Sika AnchorFix®-2 cartridges have the expiry date printed on the label.

Technical data

Density

Part A: 1.62 – 1.70 kg/l
Part. B: 1.44 – 1.50 kg/l
1.60 – 1.68 kg/l (Part A+B mixed)

Curing Speed

Temperature	Open time T_{gel}	Curing time T_{cur}
+20°C - +35°C	1 minute	40 minutes
+10°C - +20°C	4 minutes	70 minutes
+5°C - +10°C	8 minutes	100 minutes
0°C - +5°C	- *	180 minutes
-5°C - 0°C	- *	24 hours

*Min. cartridge temperature = +5°C

Sag Flow Non-sag, even overhead

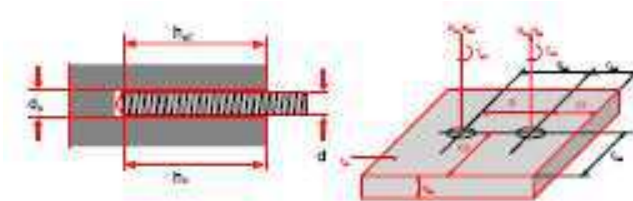
Layer thickness 3 mm max.

Mechanical / Physical

Properties

Compressive Strength 60 N/mm² (According to ASTM D695)

Design Terminology and Abbreviations



- h_{min} = Min. concrete thickness (mm)
- h_{ef} = Effective anchorage depth (bond length) (mm)
- f_{cm} = Concrete compressive strength (N/mm²)
- S_{crN} = Minimum anchor spacing to achieve NRK (mm)
- S = Anchor spacing (mm)
- C_{crN} = Minimum close edge distance to achieve NRK (mm)
- C = Close edge distance (mm)
- h_0 = Hole depth (mm)
- d_0 = Drilled hole diameter (mm)
- d = Stud or bar nominal diameter (mm)
- N_{RK} = Characteristic tensile load (kN)
- N_{Rd} = Recommended load = NRK multiplied with a total safety factor
- R_{fcN} = Close edge reduction factor, tension only
- R_{fcV} = Close edge reduction factor, shear only
- R_{fsN} = Close spacing reduction factor, tension only
- R_{fsV} = Close spacing reduction factor, shear only
- T_{inst} = Max. installation torque (Nm)

Load Capacity Data for all Thread Rods for concrete C20/25 (according ETAG001)

Anchor dia d [mm]	Hole dia d _h [mm]	Hole depth h _b = h _{ef} [mm]	Brush size	Characteristic distances		min concrete thickness h _{min} [mm]	Resin vol [ml]	Max installation torque [Nm]	Resistance to tensile loads in C20/25 concrete [kN] to ETAG 001	
				Edge C _{cr} ,N	Spacing S _{cr} ,N				Characteristic load N _{tk}	Design resistance N _{td}
8	10	64	S14	64	128	100	2.8	10	16	7.4
"	"	80	"	80	160	110	3.4	"	20.5	9.5
"	"	96	"	96	192	125	4.1	"	25	11.6
10	12	80	S14	80	160	110	4.5	20	25	11.6
"	"	90	"	90	180	120	5.0	"	29.0	13.4
"	"	120	"	120	240	150	6.7	"	40	18.5
12	14	96	M20	96	192	125	6.9	40	40	18.5
"	"	110	"	110	220	140	7.8	"	46.0	21.3
"	"	144	"	144	288	175	10.3	"	60	27.8
16	18	128	M20	128	256	160	12.2	80	60	27.8
"	"	192	"	192	384	225	18.8	"	95	44.0
20	22	160	L29	160	320	200	21.7	150	75	34.7
"	"	170	"	170	340	220	23.0	"	80.0	37.0
"	"	240	"	240	480	280	32.5	"	115	53.2
24	26	192	L29	192	384	240	34.2	200	115	53.2
"	"	210	"	210	420	270	37.4	"	125	57.9
"	"	288	"	288	576	335	51.3	"	170	78.7

Important Note:

The anchor hole must be dry.

Increasing Factor for concrete:

C30/37	C40/50	C50/60
1.04	1.07	1.09

Close edge (C) and anchor spacing (S) distances:

The characteristic edge distance (C_{Cr},N) is 1.0 x h_{ef}

The characteristic spacing distance (S_{Cr},N) is 2.0 x h_{ef}

the minimum edge (C_{min}) and spacing (S_{min}) distance are 0.5 x h_{ef}

All load capacity values assume adequate steel strength; the anchor tests were carried out using 10.9 or 12.9 steel.

Concrete capacity reduction factors, tension (ψ_N):

Single anchor, close edge C:

$$\psi_{c,N} = 0.5 (C/h_{ef}) + 0.5 \leq 1$$

Two anchors, close spacing S:

$$\psi_{s,N} = 0.25 (S/h_{ef}) + 0.5 \leq 1$$

Two anchors, c/l perpendicular to close edge C1:

$$\psi_{sc,N} = 0.25 (S/h_{ef}) + 0.25 (C1/h_{ef}) + 0.25 \leq 1$$

Two anchors, c/l parallel to close edge C2:

$$\psi_{cs,N} = 0.25 (C2/h_{ef}) + 0.125 (S/h_{ef}) + 0.125 (C/h_{ef}) (S/h_{ef}) + 0.25 \leq 1$$

Concrete capacity reduction for more complex anchor configurations in tension, and for shear forces acting towards a close edge, should be determined using the design method A, given in ETAG 001, Annex C.

Load Capacity Data for Reinforcing Bar Anchors:

Requirement for the calculation of the characteristic load capacity:

Reinforcing bar S500 ribbed

(the load capacity of the reinforcing bar itself must also be verified)

Min Concrete C20 / 25

The anchor hole must be dry

Bar diameter d (mm)	6	8	10	12	14	16	20	25
Hole Diameter d ₀ (mm)	8	10	12	14	18	20	25	32
Minimum anchor embedment h _{min} (mm)	60	80	90	100	115	130	140	150

Equation for tensile load capacity : $N_{RK} = \frac{h_{ef} - 50}{2,0}$

Equation for shear load capacity : $VRK = \frac{h_{ef} * d_0 * f_{cm}}{1000}$ (f_{cm} ≤ 50)

Reduction Factors for Close Edge Distances and Anchor Spacing:

Close edge, tension: $R_{fCN} = 0,4(C/h_{ef}) + 0,4 \leq 1$ (Valid for $0,5 \leq (C/h_{ef}) \leq 1,5$)

Close spacing, tension: $R_{fSN} = 0,25(S/h_{ef}) + 0,5 \leq 1$ (Valid for $0,25 \leq (S/h_{ef}) \leq 2,0$)

Close edge, shear: $R_{fCV} = 0,6(C/h_{ef}) - 0,2 \leq 1$ (Valid for $0,5 \leq (C/h_{ef}) \leq 2,0$)

Close spacing, shear: $R_{fSV} = 0,1(S/h_{ef}) + 0,4 \leq 1$ (Valid for $1,0 \leq (S/h_{ef}) \leq 6,0$)

Close spacing in shear must be considered if $S < 3C$ and when $C < 2h_{ef}$

Important Note:

The load capacity of the thread rod itself must be also verified

The anchor hole must be dry.

Resistance

Thermal Resistance

Service Temperature range of the Cured Adhesive, ETAG 001, part 5:

-40°C to +50°C*

*Temperature Resistance of the Cured Adhesive, ETAG 001, part 5

+50°C long term

+80°C short term (1-2 hours)

System

Information

Application Details

Consumption/ Dosage

Material consumption per anchor in ml

Anchor ∅ mm	Drill ∅ mm	Drill hole depth in mm																	
		8	90	110	120	130	140	160	170	180	200	210	220	240	260	280	300	350	400
8	10	3	4	4	5	5	5	6	6	7	7	7	8	8	9	9	10	11	12
10	12	4	5	5	6	6	6	7	8	8	8	8	9	10	10	11	12	14	15
12	14	5	6	6	6	7	7	8	8	9	10	10	11	11	12	13	14	16	18
14	18	9	10	11	14	14	15	18	19	20	22	23	24	26	28	30	32	37	42
16	18	9	10	11	13	14	15	17	18	19	21	22	23	26	28	30	32	36	40
	20	10	12	12	15	16	17	20	21	22	24	25	26	29	31	33	35	40	46
20	24	12	13	14	15	16	18	22	24	26	28	30	32	36	38	42	48	58	66
	25	18	19	21	23	24	26	30	31	32	36	38	40	44	46	50	54	64	72
24	26	24	26	28	30	33	35	40	43	45	50	55	58	60	65	70	75	100	125

The indicated filling quantities are calculated without wastage. Wastage 10 - 50%.

The filled quantity can be monitored during injection with the help of the scale on the cartridge label.

Substrate Quality

Mortar and concrete must be older than 28 days

Substrate strength (concrete, masonry, natural stone) must be verified.

Pull-out tests must be carried out if substrate strength is unknown.

The anchor hole must always be dry, free from oil and grease etc.

Loose particles must be removed from the holes.

Threaded rods and rebars have to be cleaned thoroughly from any oil, grease or any other substances and particles such as dirt etc.

Application

Conditions / Limitations

Substrate Temperature

-5°C min. / +35°C max.

Ambient Temperature

-5°C min. / +35°C max.

Material Temperature

Sika AnchorFix®-2 must be at a temperature of between +5°C and +20 °C for application.

Dew Point

Beware of condensation!

Substrate temperature during application must be at least 3°C above dew point.

**Application
Instructions**

Mxing

Part A : part B = 10 : 1 by volume

Mixing Tools

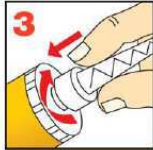
Getting the cartridge ready:



Unscrew and remove the cap



Cut the film



Screw on the static



Place the cartridge into the gun and start application mixer

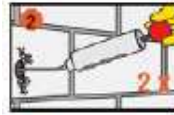
When the work is interrupted the static mixer can remain on the cartridge after the gun pressure has been relieved. If the resin has hardened in the nozzle when work is resumed, a new nozzle must be attached.

**Application Method /
Tools**

General Remarks:



Drilling or hole with an electric drill to the diameter and depth required. Drill hole diameter must be in accordance with anchor size.

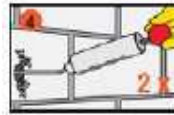


The drill hole must be cleaned with a blow pump or by compressed air, starting from the bottom of the hole. (at least 2x)

Important: use oil-free compressors!



The drill hole must be thoroughly cleaned with the special steel brush (brush at least 2x). The diameter of the brush must be larger than the diameter of the drill hole.

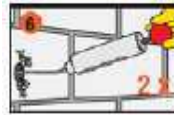


The drill hole must be cleaned with a blow pump or by compressed air, starting from the bottom of the hole. (at least 2x)

Important: use oil-free compressors!

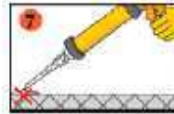


The drill hole must be thoroughly cleaned with the special steel brush (brush at least 2x). The diameter of the brush must be larger than the diameter of the drill hole.

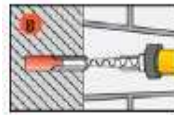


The drill hole must be cleaned with a blow pump or by compressed air, starting from the bottom of the hole. (at least 2x)

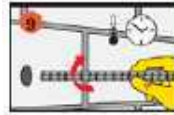
Important: use oil-free compressors!



Pump approx. twice until both parts come out uniformly. Do not use this material. Release the gun pressure and clean the cartridge opening with a cloth.

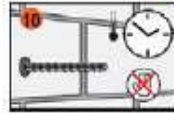


Inject the adhesive into the hole, starting from the bottom, while slowly drawing back the static mixer. In any case avoid entrapping air. For deep holes extension tubing can be used.



Insert the anchor with a rotary motion into the filled drill hole. Some adhesive must come out of the hole.

Important: the anchor must be placed within the open time.



During the resin hardening time the anchor must not be moved or loaded. Wash tools immediately with Sika® Colma Cleaner. Wash hands and skin thoroughly with warm soap water.

Important Note: Anchors in hollow blocks:

Do use Sika AnchorFix®-1 for hollow blocks.

Cleaning of Tools

Clean all tools and application equipment with Sika® Colma Cleaner immediately after use. Hardened / cured material can only be mechanically removed.

Value Base

All technical data stated in this Product Data Sheet are based on laboratory tests. Actual measured data may vary due to circumstances beyond our control.

Local Restrictions

Please note that as a result of specific local regulations the performance of this product may vary from country to country. Please consult the local Product Data Sheet for the exact description of the application fields.

Health and Safety Information

For information and advice on the safe handling, storage and disposal of chemical products, users shall refer to the most recent Material Safety Data Sheet containing physical, ecological, toxicological and other safety-related data.

Legal Notes

The information, and, in particular, the recommendations relating to the application and end-use of Sika products, are given in good faith based on Sika's current knowledge and experience of the product when properly stored, handled and applied under normal conditions in accordance with Sika's recommendations. In practice, the differences in materials, substrates and actual site conditions are such that no warranty in respect of merchantability or of fitness for a particular purpose, nor any liability arising out of any legal relationship whatsoever, can be inferred either from this information, or from any written recommendations, or from any other advice offered. The user of the product must test the product's suitability for the intended application and purpose. Sika reserves the right to change the properties of its products. The proprietary rights of third parties must be observed. All orders are accepted subject to our current terms of sale and delivery. Users must always refer to the most recent issue of the local Product Data Sheet for the product concerned, copies of which will be supplied on request.



PT. Sika Indonesia
Jl. Raya Cibinong- Bekasi km. 20
Limusnunggal- Cileungsi
BOGOR 16820 - Indonesia
Tel. +62 21 8230025
Fax +62 21 8230026
Website : www.sika.co.id
e-mail: sikacare@id.sika.com

Branches
Surabaya :
Puri Niaga Blok G No. 29, Jl. Raya Rungkut Menanggal 11, Surabaya
Tel : 031-8690202 ; Fax : 031-8682123
Medan :
Jl. Pancing / Jl. Willem Iskandar No.75 & 75 A, Kec. Medan Tembung
Tel : 061- 6619500; Fax : (061) 6619400
Batam :
Jl. Laksamana Bintan, Komp. Bumi Riau Makmur Blok E No.3, Sungai Panas
Tel : (0778) 424928; Fax : (0778) 450189

